

## NN pumpa sa Hatz-diesel motorom NN pump with Hatz-diesel motor

### Norma pumpe tipa NN

- Norma pumpe izvedene su u skladu sa standardom **DIN 24255**.
- NN pumpe namijenjene su pumpanju neagresivnih tekućina bez sadržaja čvrstih čestica do temperatura 90 °C.
- Brtvljenje mehaničkom brtvom

### Norm pumps type NN

- Norm pumps are designed in compliance with the **DIN 24255**.
- NN pumps are suitable for handling non-aggressive and non-abrasive liquid, temperature up to 90 °C.
- Shaft sealing with mechanical seal.

### Hatz diesel motor

- Tip motora **1B50**
- Male dimenzije, mala masa, univerzalna upotreba
- Zrakom hlađeni
- Ručni i/ili elektro start  
12V ili 24V

### Hatz-diesel motor

- Motor type **1B50**
- Small, light-weight, for universal application
- Air-cooled
- Recoil – and/or electric start  
12V and 24V

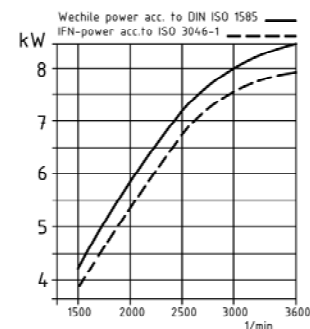
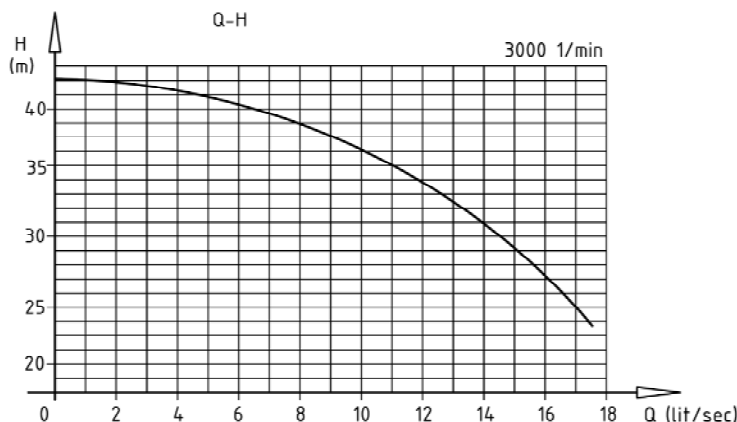
### Namjena pumpnog agregata (široki spektar):

- Agrodjelatnost
- Protupožarna namjena
- Energetika, naftna industrija (bušotine)
- Građevinarstvo
- Brodogradnja i luke, i sl.

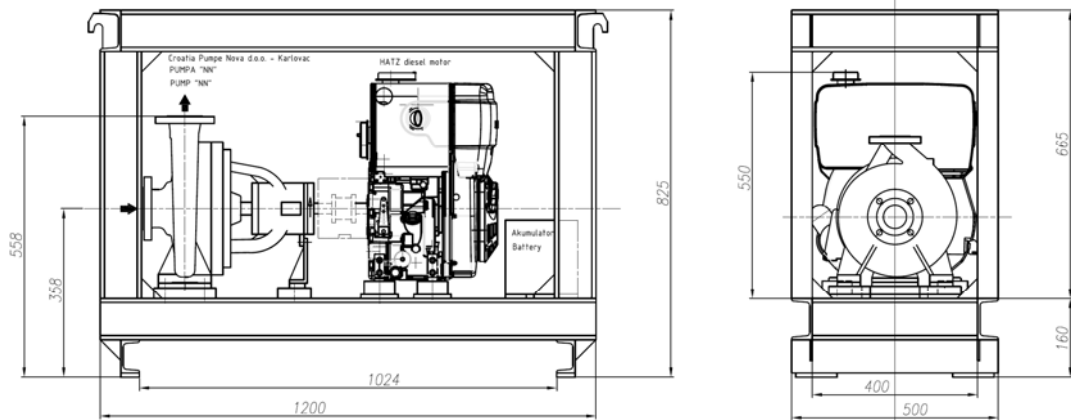
### Pump-diesel aggregate (wide field of use):

- Agriculture
- Fire-fighting activity
- Power plant, petrol industry (oil field and drilling area)
- Building construction industry
- Marine industry and port, etc.

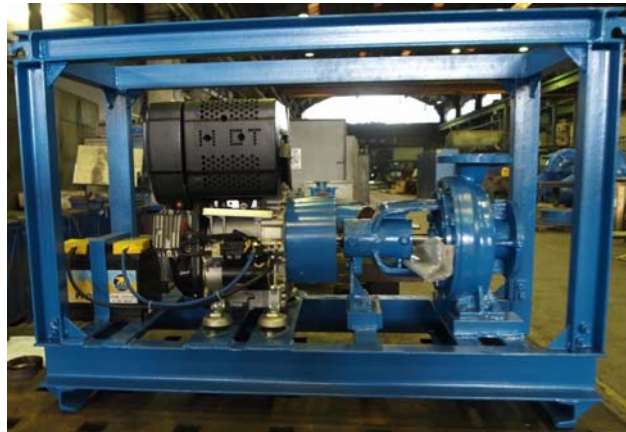
### Q-H and motor characteristics



Dimenzije i masa; Measures and weight;



Ukupna masa ~220 kg; Total weight ~220 kg.



Agregat kompletiran za isporuku; The complete unit for delivery.